

# BrawlerFab Behind the Grille Light Mounts

## Installation Guide

**Before you start, check to ensure you have everything you need to install your light mounts.**

- 1- Right and Left side light mounts
- 2- Windshield Reservoir relocation brackets (2 total, smaller bracket is in the bag with the hardware)
- 3- Quantity (2) wire harness (washer pump and level sensor relocation extensions)
- 4- Windshield washer extension hose with (1) coupler

### **Hardware**

- 1- 6mm bolt with washers and nut
- 2- Quantity (2) 8mm bolt with washers and nut

**Tools needed to install the BrawlerFab Behind the Grille light mounts.**

- 1- Clip removal tool or similar to remove plastic clips
- 2- 10mm wrench or ratchet/socket
- 3- 13mm wrench or ratchet/socket
- 4- 4mm allen wrench or bit
- 5- 5mm allen wrench or bit
- 6- Handheld Drill
- 7- ¼" drill bit
- 8- 6" hole saw (7" for bigger than 6" lights)
- 9- Heat gun



## Step 1

This light mount requires you to remove the grille and cut away some of the plastic shroud. Unless you have removed your grille before, I would highly recommend watching some YouTube videos on TRX grille removals before attempting this install.

## Step 2

Disconnect the negative lead on your battery and remove the grille from your TRX. Set it on a work bench for now.

## Step 3

Remove the Windshield Washer reservoir. There are (2) bolts holding it in place. Take the time to note the colors of the connectors (there are 2) and locations for the pump harness and level sensor harness. Disconnect both connectors and the windshield washer hose. Have a plug ready to prevent the washer fluid from pouring out of the reservoir. Set the reservoir in a bucket to catch any fluid that escapes from the reservoir. We will get back to relocating it later.

## Step 4 \*\*\*\*CRITICAL STEP\*\*\*\*

Set your grille face up on a work bench and locate this spot in the mesh on the right side of the "M" on your grille. This is where you will drill the 1/4" hole to index where you will drill out the 6" hole. Place the drill bit into the grille and ensure the drill bit is resting in the corner of the mesh opening and pointing straight into the grille. Drill the hole through the shroud behind the grille. Find the corresponding location on the left of the "R" on the grille and drill that hole. **See Figure 1**

## Step 5 \*\*\*\*CRITICAL STEP\*\*\*\*

Flip the grille over on your work bench and find the 2 holes you just drilled in the left and right side shrouds. Using these holes to index your 6" hole saw, carefully drill the 6" hole into the shroud. Go slow, don't apply too much force and most importantly, do not go beyond the shroud as you do not want the hole saw to hit the mesh grille.

## Step 6

Smoke a cigarette or doobie, snort a line and do a shot of cheap tequila as you just completed the scariest part of this install. Or, if you're like me, screw that nonsense and move onto the next step as we still got work to do! :)

## Step 7

Remove the 90 degree nipple off of the windshield washer hose and attach it to the extension hose. Connect the extension hose to the factory hose. (We will reroute the hose along with the wire harnesses after the grille gets reinstalled on your TRX)

## Step 8

We are going to be extending both wire harnesses in this step. It is critical that you do one at a time as to not get the connectors mixed up. Carefully peel back the tape wrap from one of the connectors to expose the wires. Both have 2 wires that we will be splicing into so expose enough of the wire so you can do this. Try to get at least 6" exposed and with at least 3" of wires on the connector side, cut the wires. Splice in one of the supplied harnesses (they are both the same) taking note of what color wire from the factory harness gets spliced to red or black on the extension harness. Using a heat gun, shrink the sleeve of the butt connector to create a waterproof seal. Take the connector and splice onto the other end of the extension harness, following the same color combo used on the other end. Using your heat gun, shrink the sleeve of the butt connector. Repeat this process on the remaining factory harness. **See figure 2**

## Step 9

Back to the front of your TRX, identify the 3 radiator support bolts on each side. The head of these bolts are on the inside threading out. Using a 13mm wrench or ratchet/socket, remove all 6 bolts. Using these bolts, install the LH and RH light mounts. There is some adjustability built into the mounts so you can adjust as needed by loosening the bolts and retightening. **See figure 3 and 4**

## Step 10

Mount your favorite lights (up to 7" diameter and 3.75" depth) to the light mounts and loosely route your wires now as trying to do this once the grille is reinstalled is way more difficult.

### **Step 11**

Reinstall the grille leaving the top cover off and carefully route the extension wiring harnesses along with the extension hose behind the grille and to the passenger side fender well. Make any necessary adjustments to the lights to line up with the cutout. Using the supplied zip ties, secure the extension wires, extension hose and wiring for your lights.

### **Step 12**

Find the (3) upper strut mounting studs on the passenger side of your TRX. Remove the (2 inboard and forward) nuts on the strut. Install the Reservoir Relocation bracket onto the top of the struts using the (2) exposed studs. Secure in place with the factory nuts. **See figure 5**

### **Step 13**

Using a T27 torx on the coolant reservoir side of the bar, remove the 6mm torx head bolt securing the support bar for the airbox. Use the supplied 6mm bolt without a washer from the front side to attach the upper reservoir mounting bracket (small angle) with the mounting surface for the reservoir on the outboard side. Tighten the 6mm bolt and secure the reservoir side with the supplied washer and nut. **See figure 6**

### **Step 14**

Attach the extension hose to the pump prior to installing the reservoir. (you will thank me later for this) Install the washer reservoir to the relocation mounts using the supplied 8mm bolts, washers and nuts. The reservoir will sit on the outboard side of both mounts. Do not over tighten these bolts as you will damage the reservoir. Ensure the bolts are snug enough to prevent the reservoir from moving and that the nylon lock nuts are fully engaged.

### **Step 15**

Finish routing the wire harnesses and connect the washer pump and level sensors.

### **Step 16**

Reconnect the negative battery terminal to battery and test your windshield washer and lights. If satisfied that everything is working correctly, reinstall the top cover on the grille.

**Congratulations! You have just installed the BrawlerFab Behind the Grille light mounts! Please be sure to post up pics and tag us.... BrawlerFab on FB and @Brawler\_Fab on IG and if you are happy with the results, please leave us a review.**

**Thank you,**

**Bill**

**BrawlerFab.com**

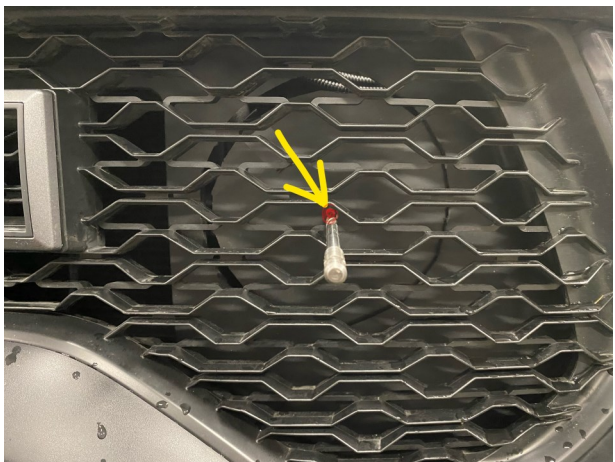


Figure 1

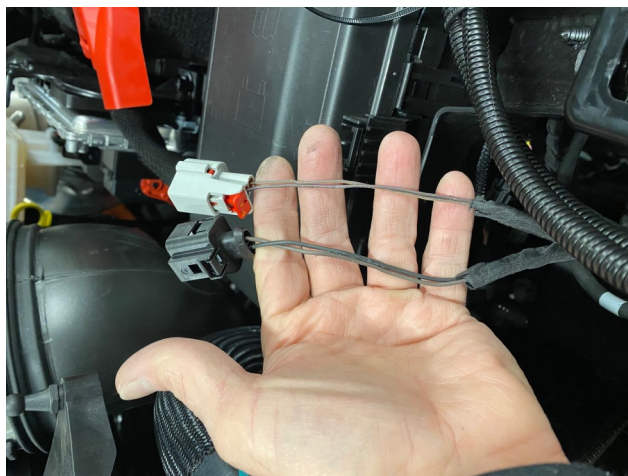


Figure 2

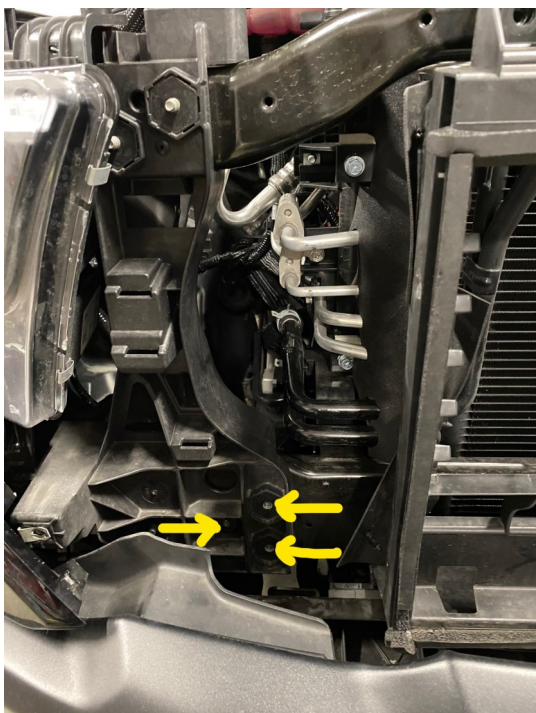


Figure 3



Figure 4



Figure 5



Figure 6